

MONTHLY MEMBERSHIP PROGRESS REPORT

LOCATION MASSACHUSETTS

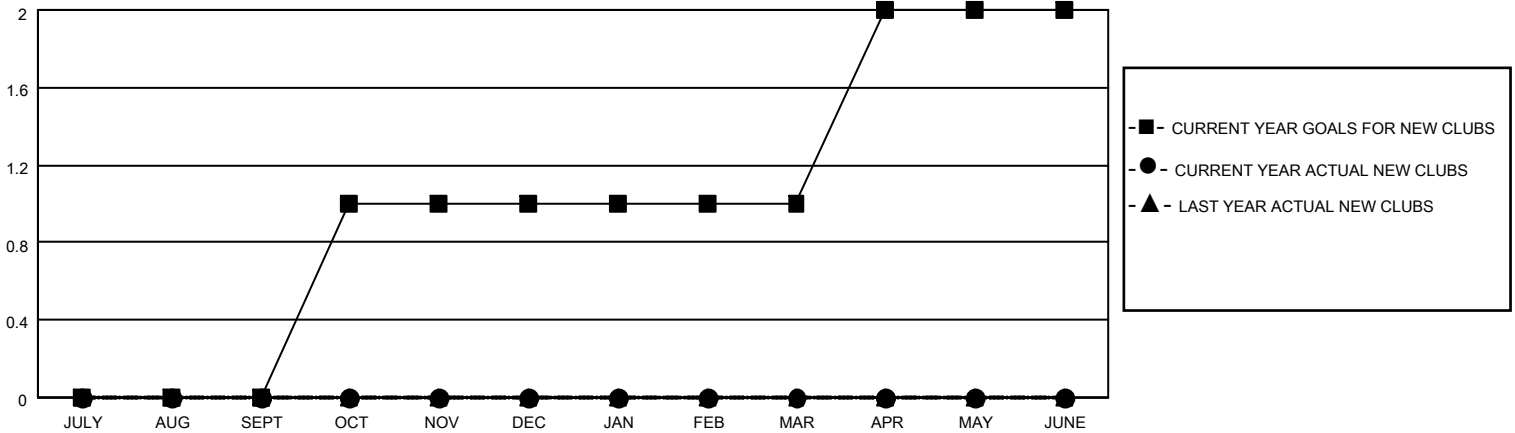
District 33 S

Results as of: 8/31/2022

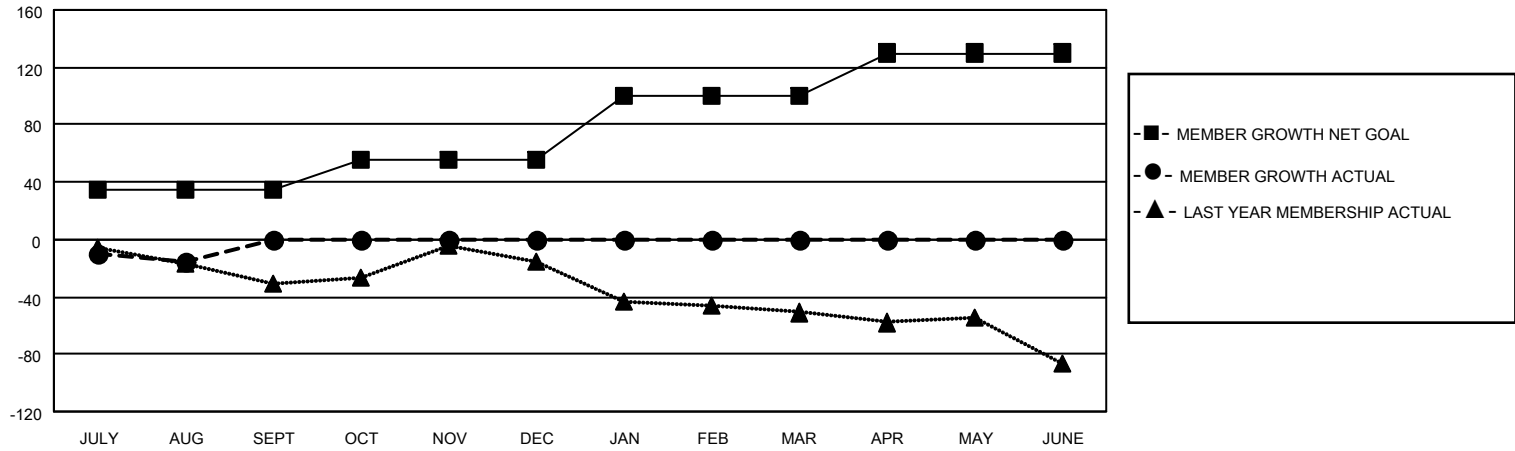
Clubs			
RESULTS FOR 2022-2023			
QUARTER	NEW CLUB GOAL	NEW CLUBS	DROPPED CLUBS
JULY/AUG/SEPT	0	0	0
OCT/NOV/DEC	1	0	0
JAN/FEB/MAR	0	0	0
APR/MAY/JUNE	1	0	0

Members			
RESULTS FOR 2022-2023			
QUARTER	MEMBER GROWTH NET GOAL	MEMBER GROWTH ACTUAL	DROPPED MEMBERS ACTUAL (including transfers)
JULY/AUG/SEPT	35	14	25
OCT/NOV/DEC	20	0	0
JAN/FEB/MAR	45	0	0
APR/MAY/JUNE	30	0	0

GOALS AND ACTUAL NEW CLUBS CUMULATIVE



GOALS AND ACTUAL MEMBERS CUMULATIVE



DROPPED CLUBS: 0

8 CLUBS OF 48 ADDED 1 OR MORE NEW MEMBERS

GENDER DISTRIBUTION

MALE	939 (61.53%)
FEMALE	586 (38.40%)
NON BINARY	0 (0.00%)
PREFER NOT TO ANSWER	1 (0.07%)

DROPPED MEMBERS

[CLICK HERE FOR CUMULATIVE MEMBERSHIP DATA](#)

DECEASED	3
CLUB CANCELLED	0
OTHER	22
TOTAL	25

TOTAL FAMILY UNIT MEMBERS 261

FAMILY MEMBERS PAYING HALF DUES 133